

*Superconero*



**50***mt*



# Contents



3	TECHNICAL DATA
4	DETAILS
5	GENERAL ARRANGMENTS
9	INTERIORS RENDERING
21	EXTERIORS RENDERING
31	CONTACTS

# Technical



**SHIPYARD**  
CRN s.p.a

**MODEL**  
CRN Superconero 50

**MATERIAL: HULL/SUPERSTRUCTURE**  
Steel / Aluminium

**TYPE**  
Displacement Hull,  
bulbous bow

**L.O.A.**  
49,8 m / 163,3 ft

**BEAM MAX**  
9,00 m / 30 ft

**BEAM MOULDED**  
8,40 m / 27,5 ft

**DEPTH TO MAIN DECK**  
4,85 m / 15,7 ft

**DRAFT FULL LOAD**  
2,65 m / 8,7 ft

**DISPLACEMENT FULL LOAD**  
460 ton

**GROSS TONNAGE**  
Under 500 GT

**GUEST**  
n° 10/12 (n° 1 owner suite + n° 4 VIP cabin)

**CREW**  
n° 9 persons

<b>50 MT</b>	<b>499 GT</b>
<b>DIMENSION</b>	<b>VOLUME</b>
<b>ST</b> STEEL	<b>AL</b> ALLUMINIUM
<b>MATERIAL</b>	

**ENGINES**  
2 x CAT C32 1193 kW @ 2300 rpm,  
or 2 x MAN D2862 LE 466 1029 kW @ 2100 rpm

**MAIN GENERATORS**  
2 x 125 ekW @ 50 Hz

**FUEL TANK**  
48.000 litres / 12.680 US gallons

**WATER TANK**  
12.000 litres / 3.170 US gallons

**BLACK AND GREY WATER TANK**  
2 x 3.250 litres / 2 x 858 US gallons

**MAX SPEED (HALF LOAD)**  
15,0 knots

**CRUISING SPEED**  
14,0 knots

**RANGE @ 10 KNOTS**  
4'100 nm

**RANGE @ 11 KNOTS**  
3'800 nm

**FLODABLE TENDER DOCK**  
Suitable for WJ tender up to (L x B) 6 m x 2,4 m

**NAVAL ARCHITECTUR**  
CRN Shipyard

**EXTERIOR DESIGN**  
Zuccon International Project

**CLASSIFICATION**  
Rina C ✖ Hull • Mach, Y, Unrestricted Navigation LY3 compliance

**STABILIZATION**  
2 x Zero speed fins stabilizers

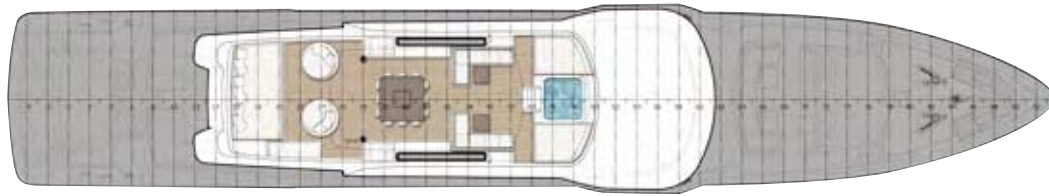
data

# Details



# General

GA (STD): EU



SUN DECK



UPPER DECK



MAIN DECK

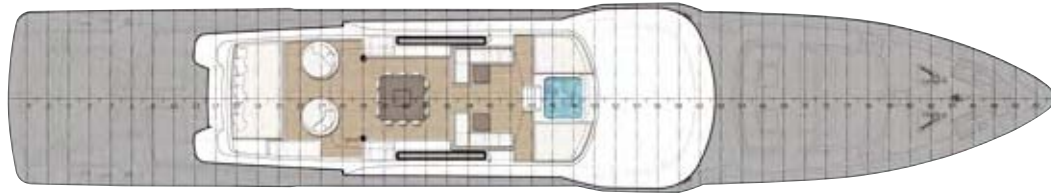


LOWER DECK

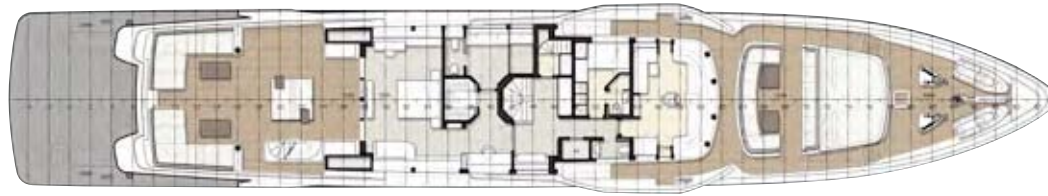
# arrangements

# General

GA (STD): USA



SUN DECK



UPPER DECK



MAIN DECK

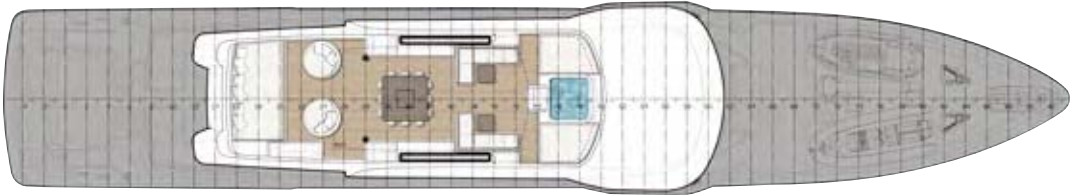


LOWER DECK

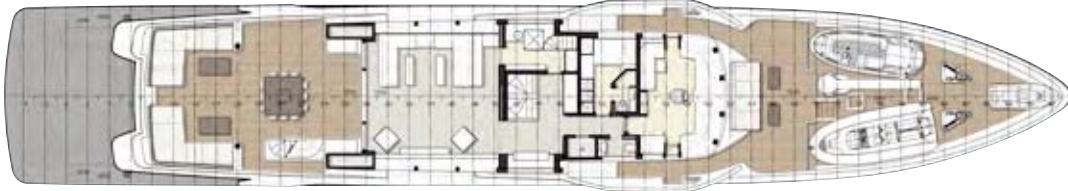
# arrangements

# General

**GA (STD): TENDER ON BOW  
AREA/LARGE BEACH CLUB**



SUN DECK



UPPER DECK



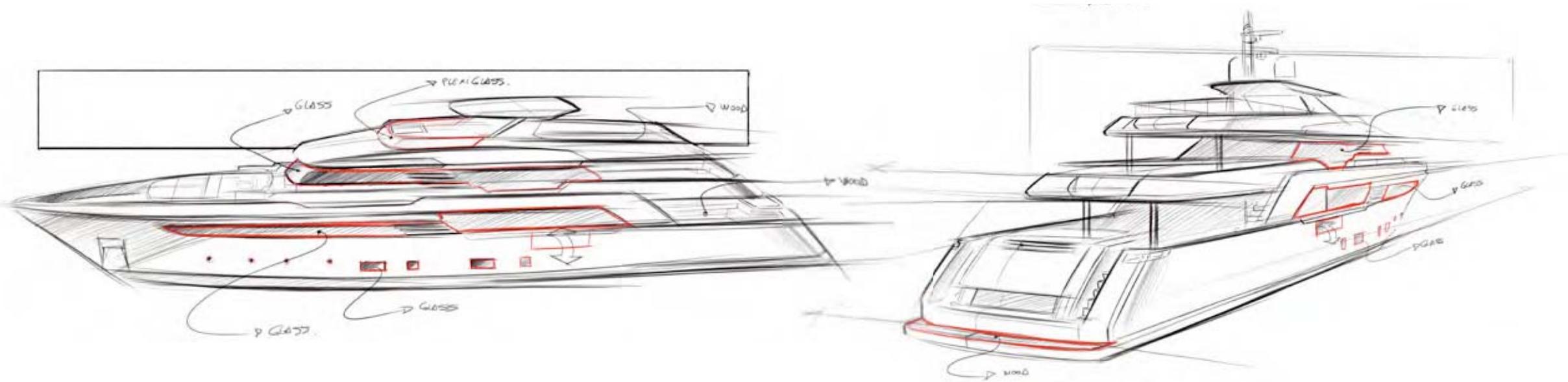
MAIN DECK



LOWER DECK

# arrangements

50mt



Supercornero



50mt



*Supercornero*

# 50mt *Superconero*



**50 mt**  
*Superconero*



CRN  
SUPERCONERO 50

50 mt  
*Superconero*



# 50 mt *Superconero*



**50mt**  
*Superconero*

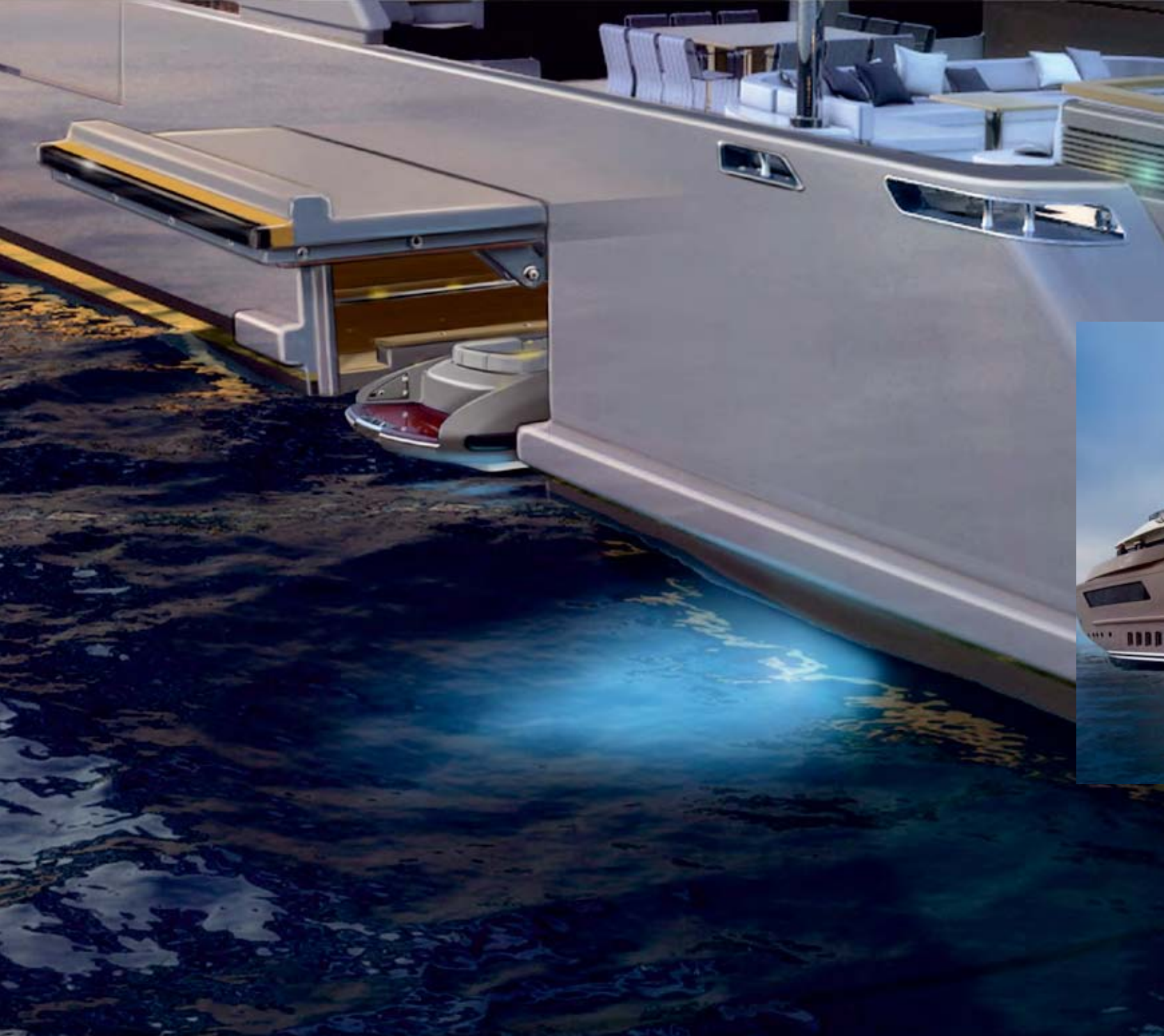


# 50 mt *Superconero*



*M/Y Lady Genyr - 43 mt*

# *50 mt Superconero*



*M/Y Jade 60 mt -  
Floodable garage  
Tender Bay concept*



# 50 mt *Superconero*



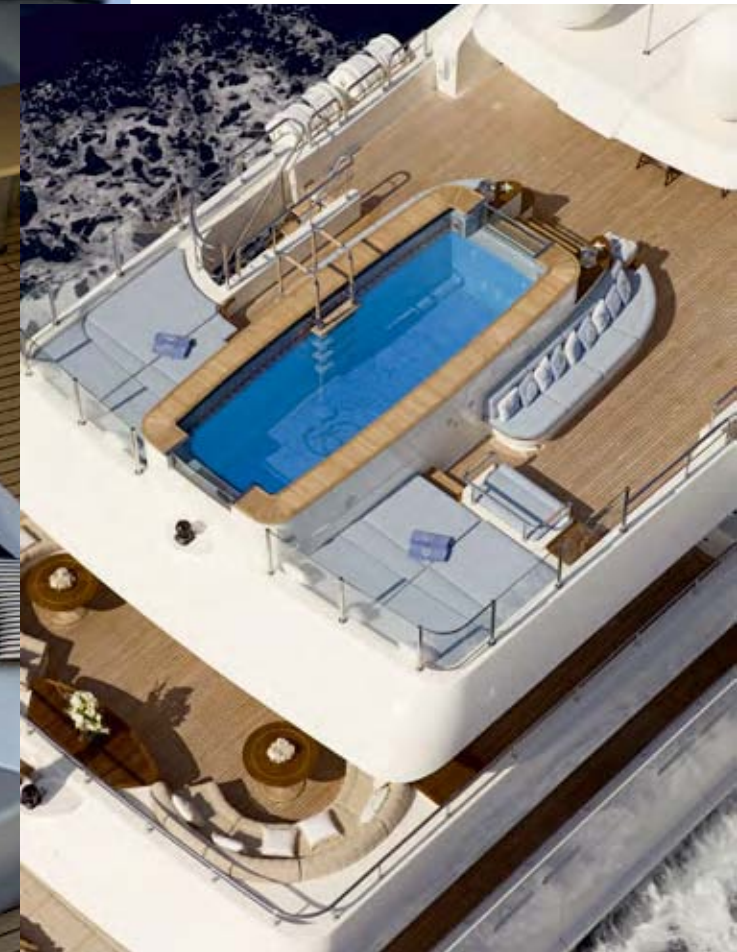
*M/Y Jade 60 mt - Beach Club*

# 50 mt *Superconero*



*M/Y Jade - 60 mt*

*50 mt  
Superconero*

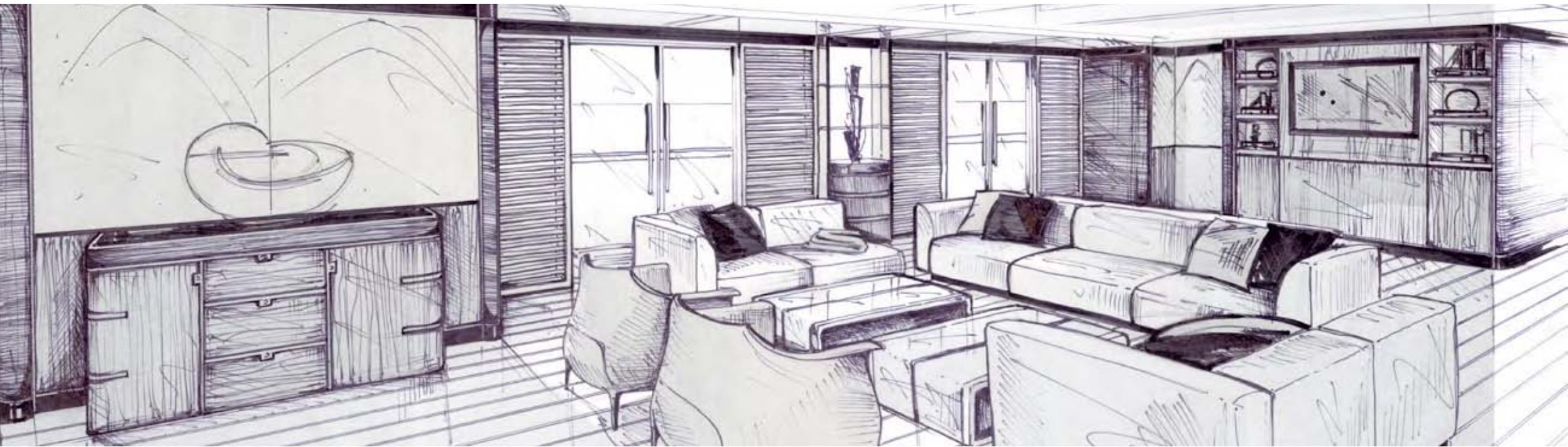


*M/Y Romance - 57 mt*

# 50 mt *Superconero*



**50mt**  
*Superconero*



*Classic style*

50 mt  
Superconero  
CLASSIC STYLE



50 mt  
*Superconero*  
CLASSIC STYLE



**50 mt**  
*Superconero*  
CLASSIC STYLE





# 50 mt Superconero



Contemporary style



# 50 mt Superconero

CONTEMPORARY  
STYLE



**50 mt**  
*Superconero*  
CONTEMPORARY  
STYLE





# 50mt Superconero

CONTEMPORARY  
STYLE





**50m**  
*Superconero*  
CONTEMPORARY  
STYLE



**50 mt**  
*Superconero*  
CONTEMPORARY  
STYLE



# Contacts

## Sales & marketing department

*Luca Boldrini*  
Sales & Marketing Director  
+39 349 8327321  
[luca.boldrini@crn-yacht.com](mailto:luca.boldrini@crn-yacht.com)

*Filippo Beltrame*  
Area Manager USA  
+1 954 8298508  
[filippo.beltrame@crn-yacht.com](mailto:filippo.beltrame@crn-yacht.com)

*Laura Quattrini*  
Back Office  
+39 071 5011 111  
[laura.quattrini@crn-yacht.com](mailto:laura.quattrini@crn-yacht.com)

*Elisa Brecciaroli*  
Back Office  
+39 071 5011 111  
[elisa.brecciaroli@crn-yacht.com](mailto:elisa.brecciaroli@crn-yacht.com)



Via Mattei, 26 - 60125 Ancona Italy  
p. +39 071 5011 111  
[www.crn-yacht.com](http://www.crn-yacht.com) - [info@crn-yacht.com](mailto:info@crn-yacht.com)

a FERRETTIGROUP company

Follow us

