



RIVIERA



HAND CRAFTED BY AUSTRALIA'S MOST AWARDED LUXURY YACHT BUILDER



NEW 52 ENCLOSED FLYBRIDGE
THE EMBODIMENT OF EVOLUTION

INTRODUCTION

When our highly talented team of designers and engineers first set out to create a completely new Riviera – one befitting membership of our exclusive Flybridge collection – they immediately turned to our loyal legion of blue-water cruising aficionados.

After all, who better to help steer Australia's most-awarded builder of luxury motor yachts into exciting new waters than highly experienced members of our global family of Riviera yacht owners?

Now, after this comprehensive consultation process, we present to you the supremely seaworthy, technologically advanced and absolutely luxurious Riviera 52 Enclosed Flybridge.

This new addition to our classic flybridge collection certainly does stand as testament to a growing worldwide affection for Riviera's hallmark passion for perfection – she more accurately reflects the international standards nomenclature, and enhances Riviera's competitiveness on the world stage.

And while she retains the distinct indoor/outdoor characteristics for which Riviera is internationally renowned, the new 52 Enclosed Flybridge is much more than mere model refinement – in fact we've seized the opportunity to incorporate a wide range of standard inclusions that, in the past, might have been considered optional upgrades.

Of course, this thoughtful consideration for our Riviera family of owners is a key part of our ethos of doing all we can to help our valued owners achieve ... 'the ultimate boating experience'.

Key features – 52 Enclosed Flybridge

- Full 9.90 square metre no-nonsense cockpit
- Spacious and sumptuous saloon, with opening side windows and massive front windows enhancing natural light and fresh air
- Flexible three-stateroom, two-bathroom accommodation plan. The master stateroom can be located forward or aft
- Savvy storage concepts throughout
- Easy access panels to all key service points throughout the boat
- CZone digital switching system
- Sporty helm with ultramodern technology, including Glass Cockpit as standard
- Joystick controls x 2, with optional flybridge aft tournament station
- IPS2-950 propulsion system, twin 533kw / 725hp engines and drive units
- Riviera's renowned strong, robust hull with keel is backed by a 5-year structural warranty
- Exclusive membership of a global family of over 5100 luxury motor yacht owners





THE BEST OF BOTH WORLDS

Befitting a luxury yacht of this calibre, the Riviera 52 Enclosed Flybridge incorporates clever and convenient alfresco lifestyle concepts and ultramodern technology with luxurious appointments ... not to mention enhanced serviceability, savvy storage and an exacting eye for detail from fit to finish that reminds you that she is nothing less than an Australian-built Riviera.

You will sense our hallmark passion for perfection from the moment you step onboard – double transom doors allow better access from both the port and starboard sides in effect adding the large swim platform to what is already a full-scale, no-nonsense cockpit and creating a walk-around transom lounge with additional storage bin for swimming and diving gear.

The swim platform, with lift-out stainless steel rails, also has a number of options to suit individual owner requirements, for example: custom rod holders and a bait preparation station can be fitted for the angler, as well as a 400kg hydraulic lift to assist with tender storage.

Owners have the option of a longer transom lounge, or even a live bait tank with glass front, depending on requirements.

In the floor of the 9.90 square metre (106'6") cockpit are separate hatches – with stainless steel lock-downs – providing direct maintenance access to either of the pod drives, as well as a large, central, self-draining moulded lazarette locker to store cockpit furniture and water toys, and also deep fish bins to port and starboard.

Forward there is a comfortable three-seater cockpit mezzanine lounge to port – upholstered in high-quality weather-proof vinyl – and there is an optional integrated and interchangeable table to provide a versatile alfresco entertaining area, which can also be converted to a day-bed.

Behind the cockpit lounge is a double-plated refrigerated cool box and self-draining





recycling bin, as well as manual bilge pump access and lockable cabinet containing battery switches and AC/DC control board.

To starboard there's a lift-up lid with gas strut which reveals a double BBQ with stainless steel splashback and LED lighting, ice-maker, sink, solid surface bench top and even more storage – enough to impress even the most discerning chef.

The cockpit's innovative joystick docking control is also starboard, although owners have the option of having it located on the port-side. This control is protected from the elements in its own enclosed fibreglass compartment.

Opening out and over the cockpit is the GRP hardtop, which can be extended even further with a stainless steel and acrylic canvas awning for faded protection from the sun and extremities. There's also the option of a rear-mounted camera, should owners desire.

THE JOY OF JOYSTICKS

Having now launched hundreds of pod-driven luxury pleasure yachts, Riviera is at the forefront of a marine revolution offering impressive fuel economy, high performance, quiet operation, more internal space and, of course, joystick control.

The innovative joystick offers slow-speed maneuverability when backing up on a prize catch, in addition to precise docking. Indeed a skipper – either solo or with a novice crew – can simply push and twist the joystick to make the boat respond immediately, pivoting in place or crabbing sideways into a berth that's just long enough to fit the vessel. There's also an additional joystick to starboard in the cockpit, the option of having it located on the port-side if owners desire.

The 52 Enclosed Flybridge has joysticks at the helm and in the cockpit, and there's an option for a tournament station starboard and aft on the flybridge which also includes a joystick, steering wheel, throttles and, if so you desire, an optional 15" multi-function display.



STEP UP TO THE SKY LOUNGE

Ascending to the modern flybridge via a stylish floating internal staircase with teak treads, you start to gain a full appreciation of the thought and consideration behind this new-generation Riviera 52.

Riviera-standard GRP enclosed on three sides, the ultra-modern flybridge is both spacious and sumptuous, with the rear enclosed by strata glass from the hardtop to the floor with marine-grade U-shaped opening zippers, and complemented by a highly polished rear stainless steel railing.

When you divert your eyes from the ultra-modern dash, two fully adjustable helm seats and forward lounge with storage underneath you'll appreciate how you can relax on the large L-shaped lounge to port, which also has a lift-up base for even more storage.

The bright and breezy atmosphere here in this virtual sky lounge is achieved through the large, opening side windows and massive windscreen – all of which come with covers. There's a lockable hatch and stainless steel ladder to the hardtop – and there's even an option for an electric sliding sunroof and integrated blind to open up the flybridge even further, should you desire.

Thoughtfully placed overhead grab rail and a padded, upholstered headlining are a nice touch too, as is the wet bar including solid surface bench top, refrigerator, drink holders, sink with hot and cold water ... all serving to keep you refreshed while underway, and nice and close to the staircase so the galley can easily feed prepared delicacies up to the gathering – simply send your request via intercom.

And if you desire your own personal soundtrack to the panoramic view, the Riviera 52's flybridge also sports an AM/FM stereo, CD/DVD player with iPod interface and four speakers, with the option of including an integrated 26" LED TV.

1 and 2. Above the internal staircase to the flybridge is a watertight, lockable hatch that can be closed for safety offshore or locked when in the marina or at anchor.





WINDOW TO THE FUTURE

Volvo, through the game-changing IPS pod propulsion, already offers the joys of joystick maneuverability, Dynamic Positioning System for station-holding while preparing lines and fenders or while waiting off a fuel jetty, as well as Anti-Corrosion Protection and Auto-Pilot.

However, the 52's Glass Cockpit takes the overview and control of engines and navigation (even auto-pilot), to extraordinary new heights ... and all in one place. Options can include auto-trim and full slow-speed steering, SportFish mode and Clear Wake.

PLEASE, TAKE YOUR SEAT

The stylish and sophisticated command centre of 52 Enclosed Flybridge is truly testament to its superior design elements and Riviera's passion to both source and embrace the latest in marine navigation technology.

While two helm seats is a rare feature for a boat of this size, there's absolutely "no compromise" in terms of spaciousness at the command console, which itself has a distinct automotive feel.

Of course there's excellent visibility through the expansive windscreen that has freshwater outlets at its base and heavy-duty pantographic windscreen wipers with intermittent controls.

All critical navigation electronics, comprehensive engine instrumentation and vessel controls are within easy and ergonomic reach of the skipper's seat, including the helm's sporty steering wheel, the 3.5-inch CZone digital switching panel, the remote control for the hardtop-mounted spotlight and the helm joystick control.

There's even room for up to three 17" navigation screens, and it's here that we are delighted to say that the full features of the innovative Volvo Penta Glass Cockpit navigation and CZone digital switching systems are standard inclusions with the Riviera 52 Enclosed Flybridge.



ALL THE COMFORTS OF HOME

The rear saloon bulkhead of the 52 Enclosed Flybridge is tinted, tempered glass in a highly polished stainless steel frame, adding to the sense of light and space as you step into her spacious and luxurious saloon. To port is the modern and functional U-shaped galley from which a huge glass awning window opens out and over to the cockpit, in effect opening up the rear of the boat and, at the same time, affirming the galley as the central entertaining hub of the 52.

The galley has a contemporary two-pack finish to the overhead cupboards, complementing the satin-finish American oak timber cabinetry, which also comes with the options of high-gloss or satin cherry, satin teak or satin beach. Standard features include a two-burner electric cook-top with in-built pop-up fiddles to secure pots, a convection microwave oven and an optional drawer dishwasher within handy reach of the stainless steel sink. The solid surface bench top includes a sink-cover that doubles as a cutting board, while the mixer tap conveniently swivels so you can wash down the self-draining bin compartment to port.

In the headlining above the galley is a rod locker, confirming the 52's incredible pragmatism, and to starboard are two drawer fridges and a freezer, as well as a drinks cabinet (of course, with easy access from the cockpit) which has built-in drawers for glass and bottle storage.

1. The rear galley on the port side boasts ample bench space and thanks to the ingenious awning window, creates a seamless link between the saloon, galley and cockpit. It helps bring the great outdoors in, so every guest onboard feels included in the party regardless of their location. With this extremely sociable design, there can be guests seated in the saloon area perhaps watching TV on the dash concealed raising screen, the galley gathering – preparing the next nautical feast whilst a further group of guests maybe outside keeping the BBQ master-chef motivated. All three groups are visually and physically connected through these three spaces.





RELAX IN STYLE

The 52 Enclosed's spacious saloon features a large L-shaped lounge to port with a hi-lo dining table which folds and lowers to become a coffee table. Adjacent to the dining area is an optional three-seater settee in which the middle seat base can slide out as an ottoman and form additional seating around the main dining table – also handy for family games nights. An additional table also lifts out from the settee and sits between the two remaining seats, forming additional dining or work space.

Forward of the three-seater settee is a 40-inch television and high-end sound system, stored out of the way in its own dedicated compartment to starboard. It rises elegantly and electrically at the touch of a button, and swings for viewing from every saloon seating position.

Opening, tinted side windows and huge windscreens looking out over the forward deck and bow bring in more light and fresh air. The forward deck of the 52 Enclosed Flybridge can be accessed via wide walkways with high handrails on either side of the vessel, and the options include a large sun pad to add to her versatile entertaining capabilities, or single-boom davit with a 350kg (771lbs) rating.

Again, these decisions are best left to suit specific owner requirements.

2. Abundant storage, soft-close drawer runners, stainless steel appliances, ample drawer refrigeration, practical splash backs and a generous footprint make this galley a real centrepiece. 3. Opposite the galley is additional refrigeration and freezer space, bar storage and the nerve centre of the 52, the C-Zone digital switching panel. From here all of the vessel's systems can be controlled and programmed at the touch of a finger. 4. The conversation hub of the 52 is the C-shaped lounge and dining area to port and the settee opposite. From the seated position here, you have clear sight lines for 360 degrees.

OPULENT ACCOMMODATION

First Class all the way

Riviera's steadfast commitment to going "first-class" in everything it does extends to the flexible three-stateroom/two-bathroom accommodation deck of the 52 Enclosed Flybridge – again there's absolutely no compromise in terms of quality or on-board liveability and luxury.

Natural light filters into the wide accommodation atrium, courtesy of the massive saloon front and side windows above and is complemented by the accommodation deck's own clever design elements. You'll immediately garner a sense of spaciousness as you step down the non-slip, natural timber-finish companionway – the extent of headroom is clearly evident below deck.

The very generous master stateroom aft on the port-side features a contemporary palette of elegant fabric, soft-touch leatherette and satin oak with teak accents – another subtle reminder that you are aboard a world-class Riviera. Natural light is achieved through a large hull window. And, although air-conditioned, there's an opening porthole to bring in extra fresh air.



1



2



3



4



5

1. The forward saloon is a very social hub. 2. The dining table lowers and folds to a coffee table. 3. Forward in the saloon to starboard is the concealed entertainment centre providing storage for remote controls, DVD, CD's or an iPod. 4 and 5. The starboard settee is an ingenious piece of design with its optional pop-up table. Perfect for additional dining or functional as a work space.



6

Master Stateroom

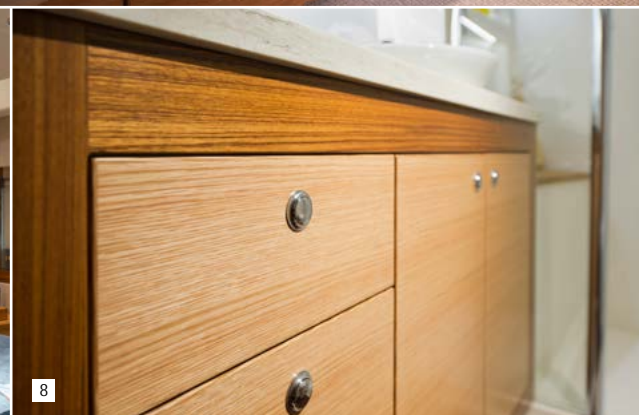
The master's massive walk-around queen-sized bed is supremely comfortable and savvy storage solutions include large under-bed drawers and a huge locker under the inner-spring mattress, in addition to the two bedside tables and cedar-lined hanging locker. From the comfort of the master bed, you can watch your favourite movie or television program courtesy of a 26-inch LCD TV and home theatre system.

The master ensuite forward also features full headroom, luxurious bathroom fixtures, ample storage cupboards, overhead and vanity lighting, solid surface bench top as well as a contemporary porcelain sink and mixer tap. The large frameless shower-stall on a slide bar, while the bathroom floor is a high-quality, non-slip, timber-finish platform enabling excess water to drain quickly, ensuring that owners remain dry and comfortable. Maximum privacy is assured here – an overhead deck hatch brings in additional light and fresh air but, when it's needed, an Oceanair block-out screen slides across.

Depending on specific owner requirements, the aft master stateroom can be configured as a guest stateroom featuring full-length, adults-sized twin beds, with the forward stateroom becoming the master.



7



8



9

6. The aft port stateroom can either be the master or VIP guest. Both the the starboard and port aft cabins feature generous size port lights and opening port hole bringing abundant light and fresh air below.

7. Clever storage abounds in the port aft stateroom both behind and beneath the bed. 8. Detailed joinery featuring teak and American oak give a very contemporary finish. 9. The port side bathroom. Generous bench top space, storage and shower stall size are key design features.

3rd Stateroom

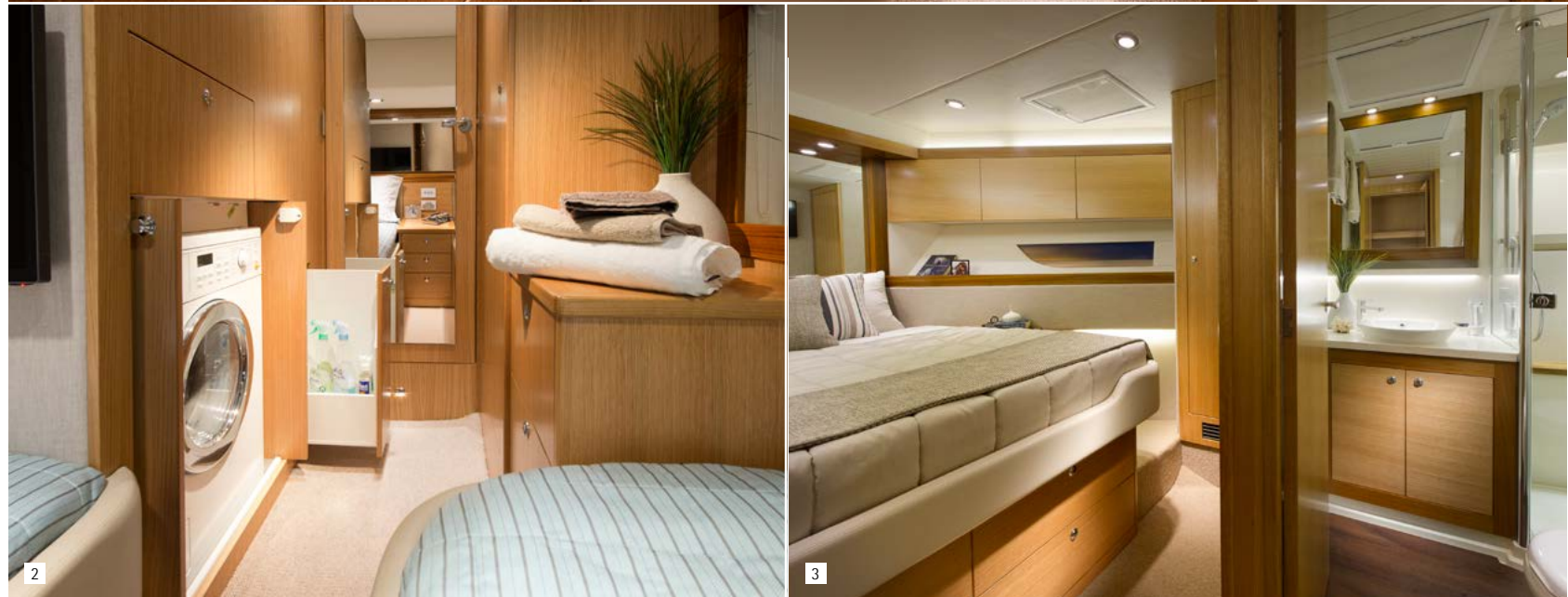
There's an opening port hole and large hull window in the starboard aft twin stateroom as well, enhancing the abundance of light and ventilation throughout the accommodation deck.

Consistent with the "nothing less than the best" philosophy at Riviera, there is full headroom and adult-sized twin beds, as well as cedar-lined hanging locker, drawers and under-bed storage. At the entrance to the cabin there's a large and convenient storage compartment which accommodates the laundry centre and optional 22-inch LCD TV and, again, premium brand home theatre entertainment system.

VIP Stateroom

In keeping with its commitment to going first-class, the air-conditioned VIP guest stateroom boasts all the luxuries of the master – indeed there's the option for it to actually be the master stateroom with its own private ensuite. This forward stateroom also has a comfortable queen-sized walk-around bed, cleverly placed overhead cabinets with positive locking hardware and gas support struts as well as large his/hers cedar-lined hanging lockers. Expansive hull windows and dual deck hatches maximise natural light and ventilation. Entertainment to this guest stateroom is via an optional 22-inch LCD TV and home theatre system.

Of course, the premium finish philosophy also applies to the ensuite, which mirrors the luxurious master bathroom, complete with overhead deck hatch and Oceanair block-out screen. In the standard layout, the guest ensuite starboard doubles as a day head.



1. The starboard side cabin features twin adult size beds.
2. The starboard guest cabin also features space for a concealed washer/dryer unit. 3. The forward VIP guest stateroom has ensuite access to the day head. 4. The forward stateroom can be selected as either the master or VIP guest. Optional hull windows can be added to bring into view the water infused landscape.



THE POWER IS YOURS

This neatly brings us to what may well be the really heroic aspect of this boat - the engineering department that makes all this performance and generosity possible.

The new Riviera 52 Enclosed Flybridge comes standard with the proven and popular twin IPS2-950 pod configuration with D11 engines, each delivering 725hp.

Quiet operation is achieved through under-water exhausts, an effective silencer, state-of-the-art turbocharger and an air filter with improved insulation.

At the same time, the robust engine design contributes to minimising on-board vibrations. And in addition to superior handling maneuvering in tight quarters, IPS2 also offers excellent power-to-weight ratio, impressive fuel efficiency, long cruising range and high top-end speed.

The renowned Volvo Penta IPS system puts twin forward-facing counter-rotating props to the fore. Volvo includes traditional lever controls as well as the intuitive joystick that can single-handedly get you in and out of the tightest of marina berths.



1

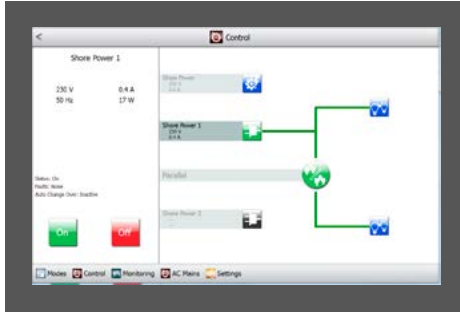


2



3

1. The engine room as full headroom forward with all of the key electrical controls and circuits located at eye level.
2. The CZone digital switching master control panel is located in the saloon. From here you have one touch, full and instant control over of all onboard AC and DC systems and equipment. CZone meets global marine industry standards and utilises an NMEA 2000 protocol. CZone is a proven and reliable system that has electro-mechanical back-up fusing, system intelligence in all modules and easy replacement of modules. There is a manual override function for redundancy.
3. With CZone you have the option to add an additional iPad to operate as a remote control for all your onboard systems.



STEP INTO THE FUTURE

Enter CZone: which extends the touch-screen monitoring and control to a suite of other onboard systems, including lighting, pumps, batteries, entertainment systems and appliances.

There are two CZone panels on board the Riviera 52 Enclosed Flybridge – one in the galley and one at the helm – with the option of additional iPad connectivity.

C-Zone allows owners to operate multiple circuits at a touch, energising all lighting and electrics depending on your requirements. It comes pre-programmed with three Modes – "entertaining", "cruising" and "dock unattended" – and these modes can be customised by the owner so the system works exactly how you want.

There's also a "service" mode that shuts down all power and systems. Other user-friendly features include interior light-dimming, timer controls, automated circuit control, wiper speed and wash functions.

Additionally, ensuring you can fully tailor you're your Riviera experience, there is a comprehensive range of optional and innovative factory-fitted electronic packages and custom fitments are also available through Riviera Electronics – everything from state-of-the-art fish-finders to cameras and under water lighting.



IMPECCABLE PEDIGREE

The 52 Enclosed Flybridge's confident poise is just as evident offshore as it is at anchor – her solid and robust hull with keel is the evolution of Riviera's rich 35-year heritage in building world-class luxury powerboats that are proven in the tough Australian blue-water conditions.

Our leading-edge technology and legendary build quality combines super-strong hand layups with solid GRP hull from the waterline down, structural core material in the hull flanks, main deck and hardtop, as well as precisely fitted, lightweight resin transfer-moulded small parts that are pre-fitted for a perfect seal when all major components are bonded together.

However, even before a single piece of timber was cut for the plug work, the 52 Enclosed Flybridge was created in-house using industry-leading Unigraphics 3D computer software, allowing Riviera's team of talented and passionate international designers and engineers to put to purpose every inch of available space, with a firm focus on convenient access to every key maintenance point – any issues can be quickly identified and addressed, and service costs are kept to a minimum.

Of course, this thoughtful consideration for our Riviera family of owners is a key part of our ethos of doing all we can to help our valued owners achieve ... 'the ultimate boating experience'.



DRY WHERE IT COUNTS

The "no compromise" approach is evident in the flow-coated engine room, where the space cannot be understated – even stand-up headroom here.

Access is gained through a hatch with gas strut located at the mezzanine step at the entrance to the saloon, thoughtfully opening forward to enhance passenger safety and, at the same time, maintaining walk-through access to the saloon from the cockpit when the hatch is open.

You'll notice that, where possible, every wire, loom and plumbing line is coded, coloured, numbered and saddled neatly to ensure easy access for servicing. All fittings to the hull skin are double hose-clamped on or below the water line and the GRP 3500L fuel tanks have both sight and electronic gauges. Additionally, each engine has Raycor fuel filters, with an option for dual filters. Emergency fuel shut-off valves can be accessed from outside the engine room.

Acoustic and thermal insulation linings are key features of the 52 Enclosed Flybridge, as is the impressive commercial air intake system helping to keep the engine room temperature less than the maximum recommended by the engine manufacturer, and also reducing fuel consumption even further.

The air-conditioning units are mounted high so gravity feeds condensation water out the side, while a mist elimination system with veins draw additional moisture from the air. Four automatic bilge pumps with manual override are located at various points throughout the hull and pump out the sides, as opposed to the common drain lines located on either side of the boat that drain aft.



ELECTRICAL EXCELLENCE

The 52 Enclosed Flybridge's maintenance-free batteries ensure carefree boating and are housed in special battery boxes in accordance with American Boating and Yacht Council standards. The boat also includes individual start battery banks for increased reliability with emergency parallel function. All battery banks are individually isolated at the main battery panel located in the cockpit, providing peace of mind in the unlikely event that one engine shuts down.

Watching television while at anchor or in the marina is now whisper-quiet through Mastervolt on-board DC-AC inverter for all installed televisions.

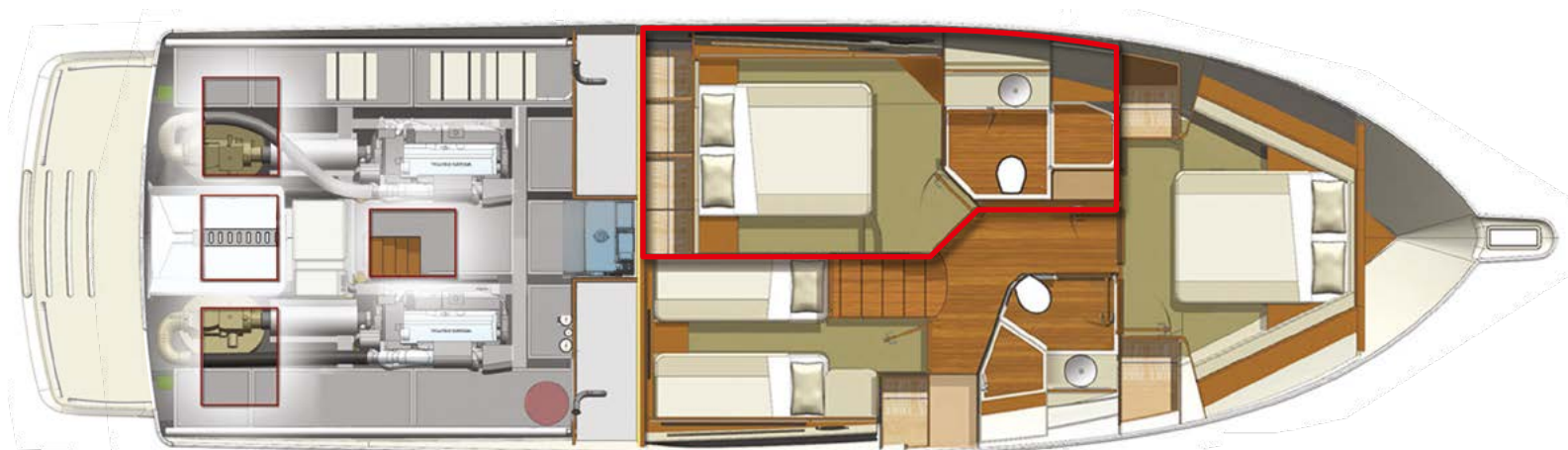
LED lights also provide trouble-free boating while reducing electrical current draw. The lamps use less than 10 per cent of the power required to run a bulb lamp – no bulbs mean no maintenance and long service life.

Also, Residual Current Device/Ground Fault Circuit Interrupter (RCD/GFCI) protection over the entire boat complies with international standards for safer boating.

And the 13.5kW Onan Marine Generator provides peace of mind and superior performance whilst at sea – it features state-of-the-art diagnostics and sound shields to minimise noise and deliver better sound quality.



Optional storage bin, transom lounge and teak cockpit floor



Optional Seakeeper gyro forward engine room

Master Cabin aft (standard)



Master Cabin forwards (option)

CRAFTED WITH PASSION

Riviera is an Australian success story and a major international marketer of luxury pleasure boats. Our growth over more than 35 years has resulted in a company that today creates and manufactures three individual model collections and supports an international dealer network that spans more than 60 countries. We are also Australia's most awarded pleasure boat manufacturer.

The secret of our success is an absolute commitment to quality. Be it our 430 strong team of people, our work practices, materials, tools and technology, environmental responsibility or after sales service, we are rigorous in pursuing the highest standards.

Our craftspeople consult world-leading naval architects, engineers and designers. Our employment and training practices have also earned us many local and national awards.

Riviera operate the largest luxury boat building facility in the Southern Hemisphere and boasts some of the most sophisticated technology available.

35 YEARS OF RIVIERA

SINCE 1980

Our **PASSION**
To create the *ultimate* boating experience.

AWARDED FOR EXCELLENCE

Riviera's vast collection of industry awards is a reflection of the pride and passion our master craftsmen put into every model in our premium range of Australian-built luxury motor yachts.





The home of Riviera. The 14 hectare state-of-the-art manufacturing facility on the Gold Coast in Queensland. This is the largest facility of its kind in the Southern hemisphere.

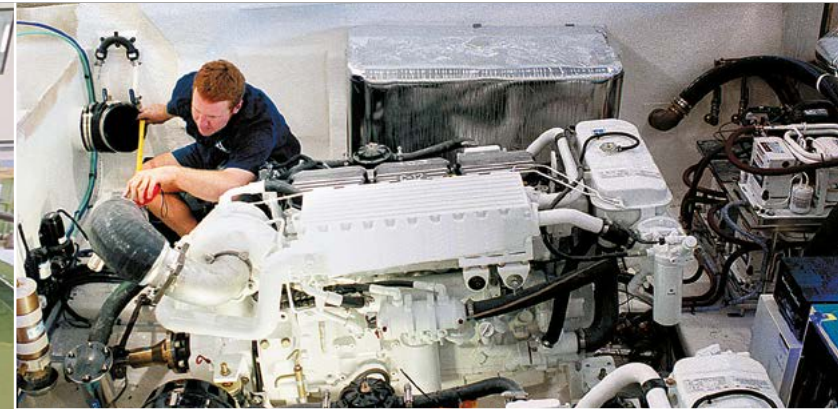
RIVIERA'S ETHOS INSPIRES CONFIDENCE

The quality of our service is commensurate with the quality of our boats and is something we are passionate about. The experience of purchasing your Riviera, from the selection of the electronics and décor, to the regular service and maintenance will all be carried out reliably, promptly and smoothly. In fact, you can count on us, and our global dealer network, for the life of your boat.

It is this consistent quality that has created Riviera's enormous and ever-growing international appeal.

Today there are over 5,100 Riviera luxury yachts located in all corners of the globe.

A sensational and growing choice of models, an impeccable pedigree, excellent value and outstanding service: now more than ever, Riviera's reputation for quality with integrity inspires confidence in boating enthusiasts the world over.





The growing Riviera global network of dealers now spans 60 countries. Find a dealer near you at RivieraAustralia.com





ELECTRONICS

Electronics play an ever-increasing role in the pleasure, performance and safety of luxury boats, and the choice of equipment that is available today is vast. In fact, selecting the equipment that meets your needs can be a very challenging task. R Electronics is here to help: we source the best systems and products from around the world, we are experts at matching technology to individual requirements and work closely with Riviera's design team and Riviera's global Dealer Network to create systems that maximise your pleasure and safety.

RElectronics.com.au



GENUINE PARTS | ACCESSORIES

A passion for quality and good design steers everything we do at Riviera – and that is reflected in our exclusive range of clothing, accessories and decor items. If you love your Riviera, you'll feel at home with the Riviera Collection: casual yet stylish, comfortable, practical and made to withstand the rigours of boating life.

The Accessory and Decor Collection ranges from a storm jacket to stylish crockery. Riviera has the total leisure and style solution.

To make your boat truly your own, we offer a wide choice of fabrics, finishes and color schemes that allow you to customise your Riviera. Of course, we also have experienced designers who can advise and assist with your individual selection.

It is a real pleasure to own and use things that are aesthetically pleasing, work well and last – and because it is only appropriate that such qualities are found on board a Riviera, we supervise each individual interior scheme from creation to installation.

RivieraParts.com.au





THE RIVIERA EXPERIENCE

When you buy a Riviera, you are really joining a family.

Indeed, this "Riviera Experience" is something we take very seriously and value very highly – we believe our core duty is to help owners of our world-class, Australian-built luxury pleasure craft to achieve the ultimate boating experience.

So you can imagine how proud we are that this commitment is something highly valued by members of our Riviera "family" of owners too.

With exclusive invitations to special adventures, social events and educational workshops, the "Riviera Experience" runs much deeper than owning a striking, sophisticated and stylish boat which not only looks a cut above the rest but also delivers in terms of superior sea-handling and innovative on-board technology.

Perhaps our passion is best reflected in the words of our Riviera owners:

"I had not even turned the key on my new 445 and I already felt part of the Riviera family. I've owned a number of boats and maybe I'm a slow learner ... I should have bought a Riviera earlier!"

"We really enjoy coming together as the Riviera community. We've been on a couple of the Experience trips and there's a real safety aspect of going offshore and being around other Riviera owners, who know their boats and your boat too."

And one more ...

"Riviera goes over and above all expectations to make sure owners enjoy a great experience for the entire life of their boats. That lifelong commitment is something that really makes a difference."

Yes, they are glowing endorsements and they are all from long-time Riviera owners who share something unique – they share the truly unrivalled "Riviera Experience".



RIVIERA



52 Enclosed Flybridge

SPECIFICATIONS

Length Overall (inc. swim platform and bow sprit)	17.26 m	56' 8"
Lh to ISO8666 *	16.15 m	53' 0"
Beam (inc. gunwale)	5.01 m	16' 5"
Maximum Draft (inc. props)	1.19 m	3' 11"
Dry Weight ** (approx.)	26,130 kg	57,600 lb
Fuel Capacity ***	3,500 L	925 US gal
Water Capacity	750 L	198 US gal
Holding Tank Capacity	400 L	105 US gal
Sleeping Capacity	6 persons	
Cockpit Area	8.50 m ²	91.5 ft ²
Mezzanine Deck	1.40 m ²	15.1 ft ²
Total	9.90 m ²	106.6 ft ²
Bridge Clearance	5.51 m	18' 1"
Standard Engine	Volvo Penta IPS950 x 2	
	533 kW	725 hp each

Riviera Clarification of Specification

*Length of the hull (Lh) to ISO8666: Includes all structural and integral parts (ie. the moulded length of the hull). It excludes parts that can be removed in a non-destructive manner without affecting the structural integrity of the craft, eg. pulpits, outdrives, driving platforms, rubbing strakes.

**Dry weight represents the estimated minimum weight of a boat with standard engines and options, no fuel or water on board, no equipment or provisions and no personnel. The stated dry weight may be exceeded.

***Denotes net tank capacity. For useable capacity do not rely on more than 90% of tank capacity. Actual capacity will vary according to boat trim and sea state.

Speeds are subject to normal weather conditions, fuel and/or water levels, passengers and equipment loads.

Refer to your Riviera Owner's Manual and your Dealer for height to hardtop and maximum height details.

The specifications in this document are not complete or definitive and are subject to change without notice and therefore may not be current. Riviera will not be liable (in contract, tort or otherwise) for any loss resulting from the inaccuracy of any information contained in this document.

Specifications may vary on a regional basis. Some images in this brochure may include non-standard or after-market options.

Warnings

Riviera is committed to building the best luxury cruisers, tailored to suit specific countries and their individual compliance laws and regulations. Riviera equipment and build specifications approved for one country may not be compliant with another country's safety and equipment regulations and as such those cruisers may have no recourse to Riviera extensive manufacturer's warranties.

Each country and State has different safety equipment standards. It is important that you ensure the requirements in your jurisdiction are met prior to the vessel being used.

Our PASSION
To create the *ultimate*
boating experience.

