



RIVIERA



AUSTRALIA'S MOST AWARDED LUXURY BOAT BUILDER



45 OPEN FLYBRIDGE SERIES II | A BOAT THAT HAS IT ALL

EDITION 15.1

REFRESHINGLY DIFFERENT, REASSURINGLY RIVIERA

Anyone considering the purchase of a luxury motor yacht has developed certain lifestyle standards and an aversion to compromise. If you relate to this, welcome to the world of Riviera... and in particular welcome aboard the 45 Open Flybridge Series II.

Over more than 35 years, Riviera has grown to become a major international force in luxury motor yachts.

Decades of building thousands of flybridge boats and a philosophy of constant refinement and innovation has fashioned a yacht that offers an extraordinary combination of comfort, performance, reliability, safety and value.

The 45 Open features fully moulded steps complete with teak treads and a storage locker underneath. The rear bulkhead awning window and door, both set in solid stainless steel frames, open out into the cockpit to create one living space between the saloon and cockpit. The saloon is one integrated living space, with the large gourmet galley forward with dining area opposite and a spacious and comfortable aft lounge.

We've included an electrically operated overhead locker in the saloon headliner for safe and convenient rod storage, while the finish on the timberwork throughout the saloon and accommodation deck is both impeccable and astonishingly durable.

Down the moulded steps (complete with LED lighting in the risers for night-time safety) you'll find an equally well-equipped and ingeniously designed cockpit.

The transom door is just one example. Not only does the door open outwards to keep the cockpit clear, but the top bridge hinges up to provide safety for the angler and crew when bringing large fish aboard. You'll also appreciate a swim platform that includes a ladder with cover and convenient grab handle.

1. The generous size cockpit is the ideal entertaining or fishing platform. 2. A large stainless steel framed door and awning window open out on gas struts and connect the cockpit and saloon as one large free-flowing space. 3. A moulded staircase makes access to the flybridge a breeze.





MADE FOR THE PLEASURE SEEKER

Storage abounds aboard the 45, from the optional live bait tank built into the transom to the various coaming lockers and twin large removable bins in the floor, there's a place for everything. For your convenience, all floor hatches are gas strut assisted, lockable and fitted with rubber seals - another case of little features that make a big difference.

Being such a sizeable area, the cockpit serves two key purposes. For the game fisherman it is a well conceived and functional platform. For the cruising family it is the social hub. To support both these pursuits we've included a cockpit sink with drain board and, next to it, a large cool box.

Everything is designed to please the eye and enhance your boating pleasure. Why not have it all?

Beneath the new-generation profile, lightweight hardtop you'll find a most-hospitable flybridge. Large, light and airy, it is where you and your friends are sure to gather both while running and at rest.

The large, open plan flybridge features lounges that comfortably seat six adults (including one that converts to a day bed), a wetbar complete with sink, mixer tap and drink holders, and an optional fridge. The flybridge also has its own independent sound system.



1



2



3

1. The helm station design has all controls and screens within easy reach. 2. The flybridge features a large L-shaped dinette to port with lounge opposite, socially positioned forward of the helm station. 3. A lockable hatch at the top of the flybridge stairs aids safety when underway and doubles as a security measure when the yacht is unattended.



The classic helm design puts you in a very commanding position: the seats are luxurious, the view all-encompassing and the ergonomics of the console design are outstanding. This includes top-mounted, twin-lever electronic engine control units and a choice of different formats to suit the electronic display options you choose to have installed.

Before leaving the flybridge, note the additional security and safety of a lockable GRP hatch that closes the flybridge off from the stairway.

The 45 is a remarkable yacht and is the creative combination of hundreds of individual and innovative features.

Some of these are major features, like propeller tunnels in the hull that provide greater forward thrust and an underwater exhaust system that minimises engine noise and fumes. Others are small but contribute much to the overall appeal of the 45. One example is the recessed cleats in the aft corners of the cockpit; a design that creates a smooth profile and prevents fishing lines getting caught.

The computer-aided hull design is certainly one of the major features. This too is largely responsible for the exceptional hydrodynamics: quick to plane, stable yet delightfully responsive, and truly robust.

You will also note the engine room is a very open and functional space. This is the result of creating a separate pump room that houses air-conditioning compressors, fresh water pumps and other associated equipment. This compartment is accessed via the portside guest stateroom and ensures easy maintenance accessibility.

In the world of mid-sized luxury flybridges, this is the yacht that raises the bar; this is the yacht that says 'yes, you can have it all!'

CREATED FOR THE CONNOISSEUR

The saloon is striking in its spaciousness, generous headroom, intelligent layout and warm yet contemporary fittings and furnishings. The combination of large tinted windows, handcrafted timberwork and rich leather seating is an invitation to relax and indulge.

Watch a movie on the large LCD screen, connect your iPod to the high-fidelity sound system, enjoy the comfort of reverse-cycle air-conditioning... and if you take up the option of the saloon helm, you can even steer your yacht in lounge room comfort. What a view it is too, as you look through the vast, seamless windscreen.





PRACTICAL AND PURPOSEFUL

The generous U-shaped gourmet galley features solid-surface benchtops, large stainless steel sink, generous storage and an impressive array of appliances. After all, it is the galley of a serious long-range cruiser.

Your eye for quality and style will continue to be impressed as you head below.



1. The deep U-shape galley houses aft sliding drawer refrigeration units x 2 on the top row and freezer and dishwasher appliances on the lower row. 2. Deep storage drawers are located beneath the port side lounge. 3. The bar and AC/DC control panels are discreetly hidden from view on the starboard side.



The master stateroom, forward, is clean and uncluttered with subtle timber styling. The island queen bed has a quality innerspring mattress and the entire bed lifts up, on gas struts, to give you additional storage. There's no shortage of hanging space either, and the lockers are cedar-lined to keep your clothing fresh.

Great care has gone into creating the ensuite. From the high-quality vinyl flooring to the solid-surface vanity top with porcelain basin through to the frameless glass shower stall, your comfort is assured even on the longest of passages.

The starboard guest stateroom provides accommodation for two with upper and lower beds and the portside stateroom features twin beds with an infill for an optional double bed. In both staterooms, you'll find the level of comfort and amount of storage space will exceed your expectations for a vessel this size.

Of course, there is a second bathroom for day use and to serve the two guest staterooms - and it has the same luxury features as the master ensuite.

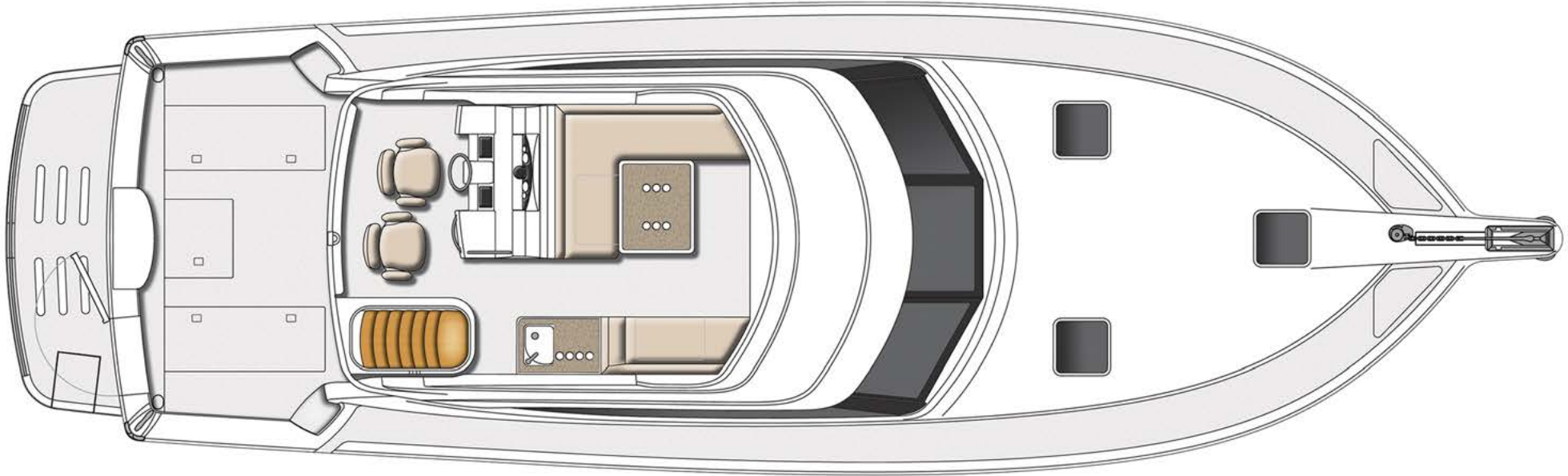
There is no doubt that the Riviera 45 Flybridge excels on style, but it's a yacht with a strong heart too - the solid hand-laid fibreglass hull with its separate compartments and collision bulkhead forward are just two of the integrity features of its construction.

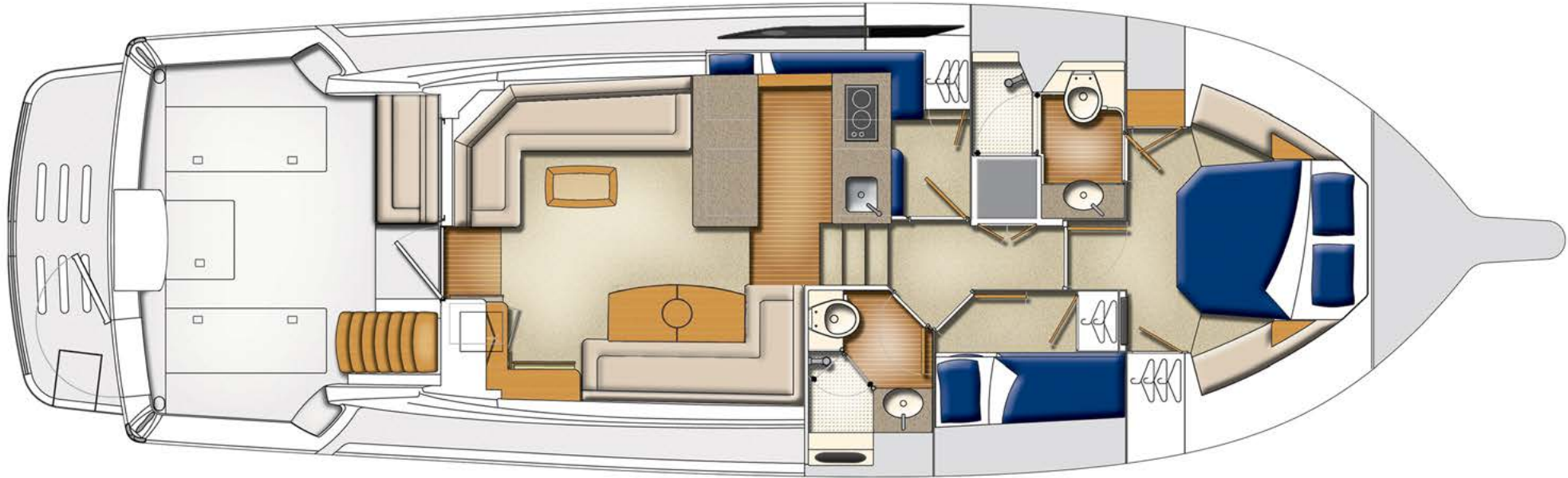
The Riviera 45 is a yacht that has it all... and it is all here for you.

1. The master ensuite is a contemporary masterpiece in design with solid surface bench tops, raised porcelain hand basins and subtle timber accents on cabinetry.
2. The master stateroom bed base raises on two gas struts to reveal a clever storage space.
3. The port side guest cabin is light and airy and features an opening porthole for additional natural light and ventilation.
4. The clothes washer/dryer and linen cupboard are centrally located to the forward accommodation space. This practical area is hidden from view by four timber doors that open flat to the side bulkheads to allow ease of movement for and aft whilst the laundry is being used.
5. The master stateroom forward offers generous storage.
6. The starboard side guest cabin offers a pullman berth design with hanging locker and drawers for storage. Ventilation is via an overhead deck hatch.
7. The day head and guest stateroom bathroom features a large clear glass partitioned shower stall with high quality fixtures just as the master bathroom.
8. The master stateroom.









Optional cockpit barbeque and mezzanine



Lower helm option

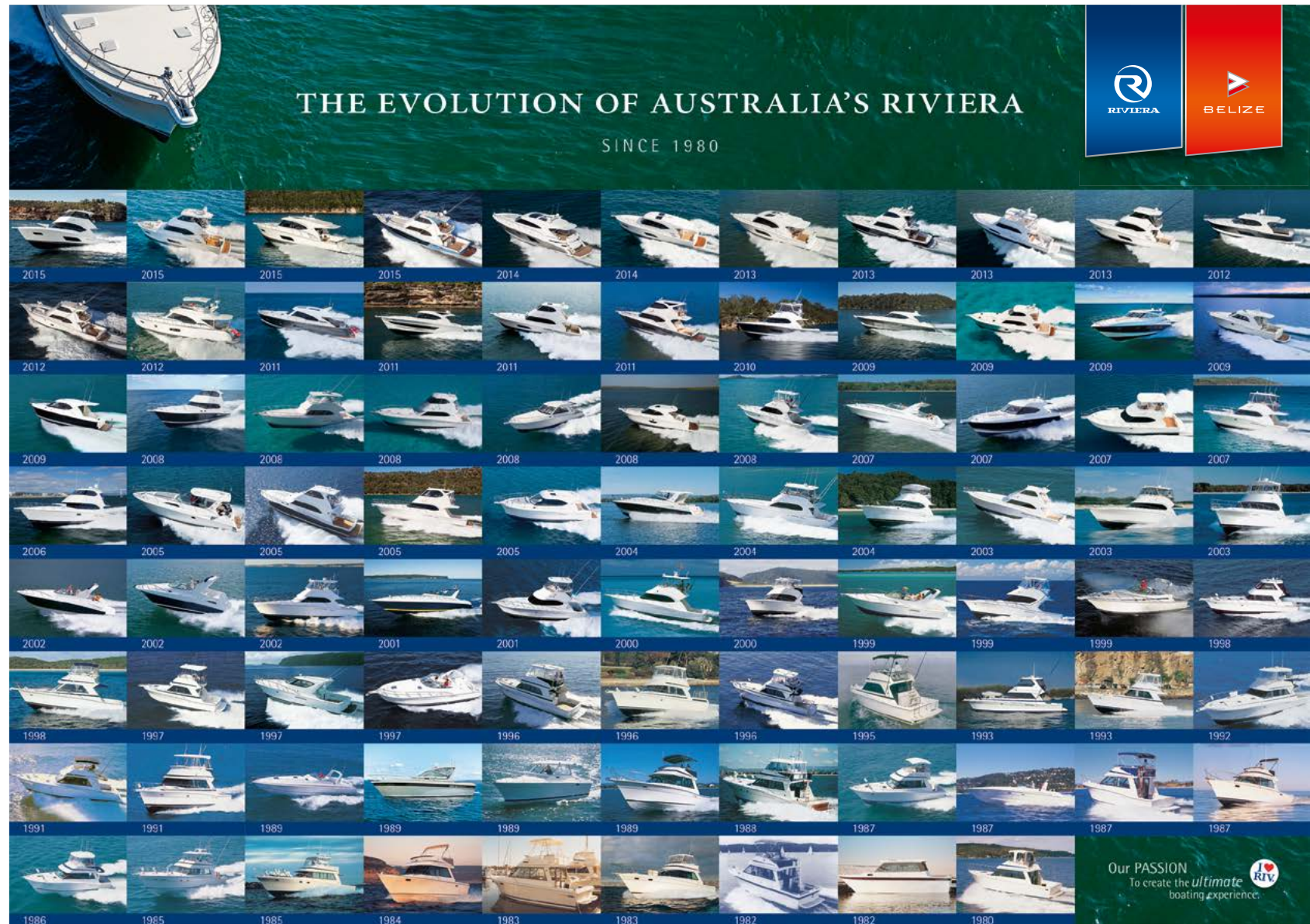
CRAFTED WITH PASSION

Riviera is an Australian success story and a major international marketer of luxury motor yachts. Our growth over more than 35 years has resulted in a company that today creates and manufactures five individual model collections and supports an international dealer network that spans more than 60 countries. We are also Australia's most-awarded pleasure yacht manufacturer.

The secret of our success is an absolute commitment to quality. Be it our 480-strong team of people, our work practices, materials, tools and technology, environmental responsibility or after-sales service, we are rigorous in pursuing the highest standards.

Our craftspeople consult world-leading naval architects, engineers and designers. Our employment and training practices have also earned us many local and national awards.

Riviera operates the largest luxury yacht building facility in the Southern Hemisphere which boasts some of the most sophisticated technology available.



AWARDED FOR EXCELLENCE

Riviera's vast collection of industry awards is a reflection of the pride and passion our master craftsmen put into every model in our premium range of Australian-built luxury motor yachts.





The home of Riviera. The 14-hectare state-of-the-art manufacturing facility on the Gold Coast in Queensland. This is the largest facility of its kind in the Southern Hemisphere. Each year in May, this world-class facility plays host to the educational and fun-filled Riviera Festival of Boating and the enormous Gold Coast International Marine Expo.

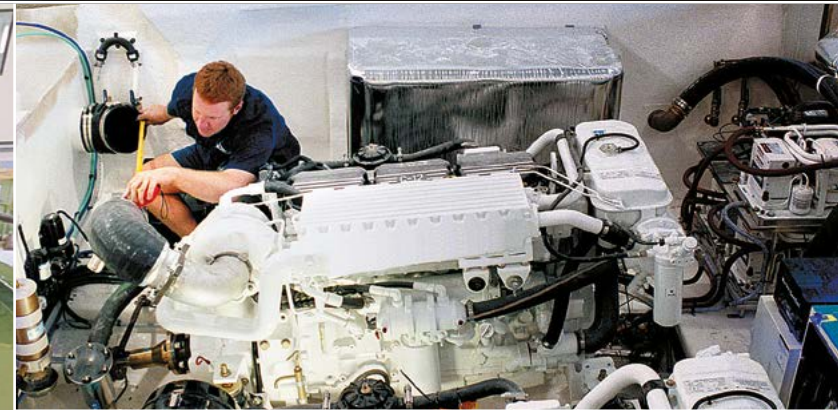
RIVIERA'S ETHOS INSPIRES CONFIDENCE

The quality of our service is commensurate with the quality of our yachts and is something about which we are extremely passionate. The experience of purchasing your Riviera, from the selection of the electronics and décor to the regular service and maintenance, will all be carried out reliably, promptly and smoothly. In fact, you can count on us, and our global dealer network, for the life of your yacht.

It is this consistent quality that has created Riviera's enormous and ever-growing international appeal.

Today, almost 5,200 Riviera luxury yachts can be seen cruising the seas, oceans, lakes and rivers of the world.

A sensational and growing choice of models, an impeccable pedigree, excellent value and outstanding service: now more than ever, Riviera's reputation for quality with integrity inspires confidence in boating enthusiasts the world over.





The growing Riviera global network of dealers now spans 60 countries. Find a dealer near you at RivieraAustralia.com





Electronics play an ever-increasing role in the pleasure, performance and safety of luxury boats, and the choice of equipment that is available today is vast. In fact, selecting the equipment that meets your needs can be a very challenging task. R Electronics is here to help: we source the best systems and products from around the world; we are experts at matching technology to individual requirements and work closely with Riviera's design team and Riviera's global Dealer Network to create systems that maximise your pleasure and safety.

RElectronics.com.au



A passion for quality and good design steers everything we do at Riviera – and this is reflected in our exclusive range of clothing, accessories and decor items. If you love your Riviera, you'll feel at home with the Riviera Collection: casual yet stylish, comfortable, practical and made to withstand the rigours of boating life.

The Accessory and Decor Collection ranges from a storm jacket to stylish crockery. To make your luxury Riviera or Belize truly your own, we offer a wide choice of fabrics, finishes and color schemes that allow you to customise your yacht. Of course, we also have experienced designers who can advise and assist with your individual selection.

It is a real pleasure to own and use things that are aesthetically pleasing, work well and last – and because it is only appropriate that such qualities are found on board a Riviera, we supervise each individual interior scheme from creation to installation.

Riviera has the total leisure and style solution.

RivieraParts.com.au





THE RIVIERA EXPERIENCE

When you buy a Riviera, you are really joining a family.

Indeed, this "Riviera Experience" is something we take very seriously and value very highly – we believe our core duty is to help owners of our world-class, Australian-built luxury motor yachts to achieve "the ultimate boating experience".

So you can imagine how proud we are that this commitment is something highly valued by members of our Riviera "family" of owners too.

With exclusive invitations to special adventures, social events and educational workshops, the "Riviera Experience" runs much deeper than owning a striking, sophisticated and stylish motor yacht which not only looks a cut above the rest but also delivers in terms of superior sea-handling and innovative on-board technology.

Perhaps our passion is best reflected in the words of our Riviera owners:

"I had not even turned the key on my new 445 and I already felt part of the Riviera family. I've owned a number of boats and maybe I'm a slow learner ... I should have bought a Riviera earlier!"

"We really enjoy coming together as the Riviera community. We've been on a couple of the Experience trips and there's a real safety aspect of going offshore and being around other Riviera owners, who know their boats and your boat too."

And one more ...

"Riviera goes over and above all expectations to make sure owners enjoy a great experience for the entire life of their boats. That lifelong commitment is something that really makes a difference."

Yes, they are glowing endorsements and they are all from valued Riviera owners who share something unique – they share the truly unrivalled "Riviera Experience".





RIVIERA



45 Open Flybridge Series II

SPECIFICATIONS

Length Overall (inc. swim platform and bow sprit)	15.66 m	51' 5"
Lh to ISO8666 *	14.70 m	48' 3"
Beam (inc. gunwale)	4.80 m	15' 9"
Maximum Draft (inc. props)	1.31 m	4' 4"
Dry Weight ** (approx.)	17,850 kg	39,400 lb
Fuel Capacity ***	2,300 L	608 US gal
Water Capacity	500 L	132 US gal
Holding Tank Capacity	151 L	40 US gal
Sleeping Capacity	6 persons	
Cockpit Area	8.80 m ²	94.7 ft ²
Bridge Clearance	4.94 m	16' 2"
Standard Engine Caterpillar C8.7 x2	478 kW	650 hp each
Engine Option Cummins QSM11 x2	526 kW	715 hp each

Riviera Clarification of Specification

*Length of the hull (Lh) to ISO8666: Includes all structural and integral parts (ie. the moulded length of the hull). It excludes parts that can be removed in a non-destructive manner without affecting the structural integrity of the craft, eg. pulpits, outriggers, driving platforms, rubbing strakes.

**Dry weight represents the estimated minimum weight of a boat with standard engines and options, no fuel or water on board, no equipment or provisions and no personnel. The stated dry weight may be exceeded.

***Denotes net tank capacity. For useable capacity do not rely on more than 90% of tank capacity. Actual capacity will vary according to boat trim and sea state.

Speeds are subject to normal weather conditions, fuel and/or water levels, passengers and equipment loads.

Refer to your Riviera Owner's Manual and your Dealer for height to hardtop and maximum height details.

The specifications in this document are not complete or definitive and are subject to change without notice and therefore may not be current. Riviera will not be liable (in contract, tort or otherwise) for any loss resulting from the inaccuracy of any information contained in this document.

Specifications may vary on a regional basis. Some images in this brochure may include non-standard or after-market options.

Warnings

Riviera is committed to building the best luxury cruisers, tailored to suit specific countries and their individual compliance laws and regulations. Riviera equipment and build specifications approved for one country may not be compliant with another country's safety and equipment regulations and as such those cruisers may have no recourse to Riviera extensive manufacturer's warranties.

Each country and State has different safety equipment standards.

It is important that you ensure the requirements in your jurisdiction are met prior to the vessel being used.

RivieraAustralia.com

Our PASSION
To create the *ultimate*
boating experience.

